

Rinse aid:

- Disinfected mirrors according to standard practice chemical process. We recommend rinsing with clean, sterile water to remove all disinfectant residues.
- Final treatment in an autoclave should be dispensed with, "virucidal" disinfectants are required.

Drying and function test:

The mirrors should be dried after disinfection. This can be done by rubbing dry with a lint-free cloth or using compressed air. After drying, the mirrors must be subjected to a functional test. Sort out damaged mirrors and dispose of them according to the usual guidelines.

Sterilization

The mirrors can be sterilized. The recommended method is sterilization in an autoclave (DIN EN ISO 17665-1)

7

Two procedures are permitted: P1:

Recommended temperature: 134°C
Recommended pressure: 3 bar
Holding time: ≥ 5 min

P2: Recommended temperature: 121°C
Recommended pressure: 2 bar
Holding time: ≥ 20 min

Avoidance of water stains

When cleaning, ensure that the descaling is set correctly. To avoid limescale residues, always rinse with fully demineralized, deionized water. Otherwise there is a risk of deposits or water stains that burn into the mirror surface and can no longer be removed.

Storage

The photo mirrors must be packed and stored in accordance with the usual guidelines for dental instruments in dental practices.

Additional information

Further information on the preparation of me-

8

You can find more information on medical products on the Internet at <http://www.rki.de>

The reprocessor is responsible for ensuring that the reprocessing actually carried out with the equipment, materials and personnel used in the reprocessing facility achieves the desired results.



Attention:

If the mirrors are used on patients with Creutzfeldt-Jakob disease, an HIV infection or another transmissible disease, subsequent sterilization is mandatory after disinfection.

Waste disposal

The materials used are silicone (handle) and metallized glass.

Restrictions on reprocessing

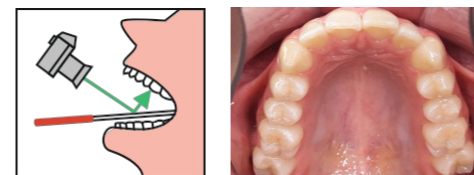
Frequent, appropriate reconditioning has only a minor impact on the

9

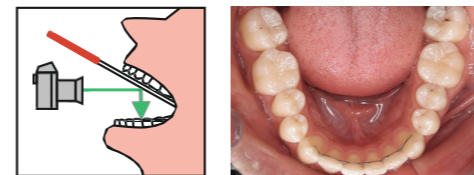
Quality and service life of the mirrors. The end of the product's service life is normally determined by wear and damage caused by use. The mirrors must then be disposed of in the usual way in dental practices.

Application of mirrors no. 11-13, 17

Occlusal images of the upper jaw:
The camera or dentaleyepad must be positioned above the mirror.



Occlusal images of the lower jaw:

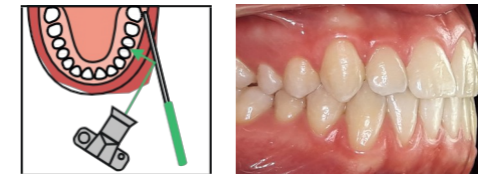


10

The camera or dentaleyepad must be positioned below the mirror.

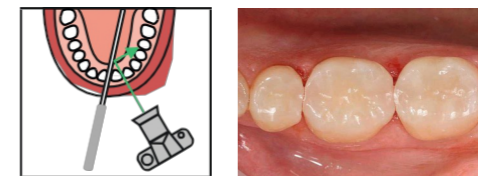
Application of mirrors no. 15 and 16


Carefully insert the mirror along the dental arch and hold it against the cheek.



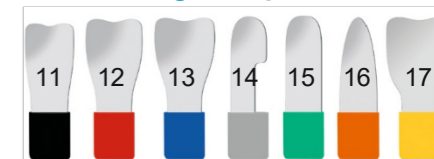
Application of mirror no. 14

Place the front, convex part of the mirror behind the anterior row of teeth.



 **doctorseyes** GmbH, Abteistr. 28,
88416 Ochsenhausen, Phone +49 7352 939212
www.dentaleyepad.de ✉ info@doctorseyes.de

doctorseyes photo mirror



Preparation and application

(Version 1.3 as of 07/2024)

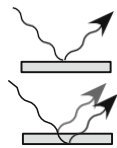
Quality promise	01
Product description	01
Intended use	02
Check before use	02
Precautionary measures	03
Preparation instructions	03
Automatic cleaning	05
Manual cleaning	05
Manual disinfection	06
Sterilization	07
Storage	08
Waste disposal	09
Application of mirrors no. 11-13, 17	10
Application of mirrors no. 15, 16	11
Application of mirror no. 14	11

Quality promise

All **doctorseyes** photo mirrors meet a high quality standard and have been carefully checked individually. Should you nevertheless have reason for complaint, please let us know, stating the batch number. This can be found on the mirror directly under the **doctorseyes** lettering.

Product description

The **doctorseyes** photo mirrors consist of a 3 mm thick float glass that has been coated with a very thin, highly reflective layer. This special front reflection avoids the otherwise usual ghost images. Each mirror is equipped with a silicone handle for better handling and protection against scratches when putting it down.



equipped. Both are corrosion-resistant, heat-resistant up to 300°C and autoclavable.

Intended use

The mirrors are used as an aid for dental photography. With their help, the camera or **dentaleyepad** can be used to achieve angles that would otherwise be impossible. The use, disinfection, cleaning and sterilization of the mirrors may only be carried out by trained specialists.

Check before use

Check that the mirrors are fit for use before each use. If the mirror shows signs of damage to the glass surface or coating, it must no longer be used. The mirror must then be disposed of.

Handling

The mirrors must not be used contrary to their intended purpose, as this can lead to damage.

Precautionary measures

For patients at risk of convulsive seizures (e.g. epileptics), an additional bite wedge must be used to protect against injury.

Warning

The mirrors were not sterilized before shipping and must therefore be disinfected and/or sterilized before use.

Preparation instructions

The following methods are permitted for reprocessing:

- Automatic cleaning
- Manual cleaning
- Manual disinfection
- Sterilization in autoclave according to DIN EN ISO 17665-1

Trained users only

According to the recommendations of the Robert Koch Institute and the BfArM, reprocessing may only be carried out by trained personnel.

General instructions

Follow the manufacturer's instructions regarding the temperatures, exposure times and concentrations of all disinfectant solutions.

Hygiene requirements for the reprocessing of medical devices and infection prevention in dentistry in accordance with the recommendations of the Robert Koch Institute (RKI) in cooperation with the Federal Institute for Medical Devices (BfArM) must be followed.

The mirrors are provided with a thin optical surface coating. Do not use coarse brushes or similar that could damage the optical coating.

Automatic cleaning

- Use the treatment chemicals and the cleaning program that the manufacturer of the thermal disinfector recommends.
- After completion, inspect the photo mirrors for visible contamination. Clean manually if necessary.

Manual Cleaning

- After use, the mirrors should be wiped immediately with soft cloths, cleaning solutions commonly used in dental practices.
- The cleaning solution used must be suitable for cleaning coated glass. be suitable.
- The mirrors must be completely covered by the solution. Do not overfill the container. load.
- Concentration, exposure time and temperature of the cleaning solution according to the manufacturer's instructions. exactly as specified.

- The cleaning solution should be suitable for manual cleaning (e.g. not foaming).
- After rinsing with clear, running water Dry well with water.
- Cleaning solution at least once a day or when visibly soiled change immediately.

Manual Disinfection

- Mirrors with suitable disinfectants according to the manufacturer's instructions (e.g. ID212, FD333, Dürr Dental or Oroclean, Chemie AG).
- Concentration, exposure time and temperature of the disinfectant according to the manufacturer's instructions. Observe the instructions on the label. Incorrect concentration and excessively long exposure times lead to material damage.
- Remove the mirror from the disinfectant solution using fresh disposable gloves. men.